

**CoREST Antibody**  
**Rabbit mAb**  
**Catalog # AP91767****Specification**

---

**CoREST Antibody - Product Information**

Application	WB, IHC, ICC
Primary Accession	<a href="#">Q9UKL0</a>
Reactivity	Rat
Clonality	Monoclonal
<b>Other Names</b>	
COREST; Nr2b2; RCOR; Rcor1; Rxrb;	

Isotype	Rabbit IgG
Host	Rabbit
Calculated MW	53327 Da

**CoREST Antibody - Additional Information**

Dilution	WB~~1:1000 IHC~~1:100~500 ICC~~N/A
Purification	Affinity-chromatography
Immunogen	A synthesized peptide derived from human CoREST
Description	Essential component of the BHC complex, a corepressor complex that represses transcription of neuron-specific genes in non-neuronal cells. The BHC complex is recruited at RE1/NRSE sites by REST and acts by deacetylating and demethylating specific sites on histones, thereby acting as a chromatin modifier.
Storage Condition and Buffer	Rabbit IgG in phosphate buffered saline , pH 7.4, 150mM NaCl, 0.02% sodium azide and 50% glycerol. Store at +4°C short term. Store at -20°C long term. Avoid freeze / thaw cycle.

**CoREST Antibody - Protein Information****Name** RCOR1**Synonyms** KIAA0071, RCOR**Function**

Essential component of the BHC complex, a corepressor complex that represses transcription of neuron-specific genes in non-neuronal cells. The BHC complex is recruited at RE1/NRSE sites by REST and acts by deacetylating and demethylating specific sites on histones, thereby acting as a

chromatin modifier. In the BHC complex, it serves as a molecular beacon for the recruitment of molecular machinery, including MeCP2 and SUV39H1, that imposes silencing across a chromosomal interval. Plays a central role in demethylation of Lys-4 of histone H3 by promoting demethylase activity of KDM1A on core histones and nucleosomal substrates. It also protects KDM1A from the proteasome. Component of a RCOR/GFI/KDM1A/HDAC complex that suppresses, via histone deacetylase (HDAC) recruitment, a number of genes implicated in multilineage blood cell development and controls hematopoietic differentiation.

#### Cellular Location

Nucleus {ECO:0000255|PROSITE-ProRule:PRU00512, ECO:0000255|PROSITE-ProRule:PRU00624, ECO:0000269|PubMed:10734093, ECO:0000269|PubMed:15897453}. Note=Upon infection by HSV-1, it is partially translocated into the cytoplasm in an HSV-1-dependent manner

#### Tissue Location

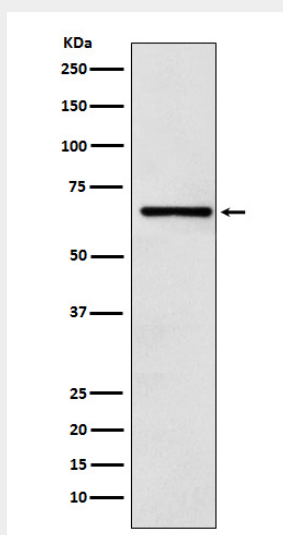
Ubiquitously expressed.

### CoREST Antibody - Protocols

Provided below are standard protocols that you may find useful for product applications.

- [Western Blot](#)
- [Blocking Peptides](#)
- [Dot Blot](#)
- [Immunohistochemistry](#)
- [Immunofluorescence](#)
- [Immunoprecipitation](#)
- [Flow Cytometry](#)
- [Cell Culture](#)

### CoREST Antibody - Images



Western blot analysis of CoREST expression in Molt-4 cell lysate.